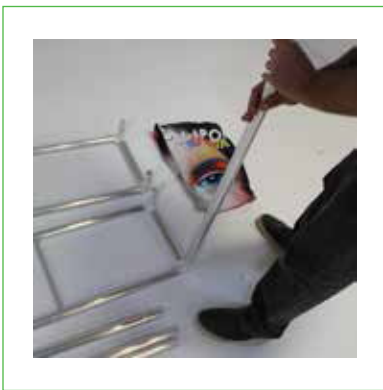


SETUP INSTRUCTIONS COUNTER



STEP 1: GETTING STARTED

Begin by removing the frame from the carry case and placing it on a clean, flat surface.



STEP 2: CONNECTION HAPPENS HERE

Connect the four poles to one of the sides until they snap together.



STEP 3: MORE CONNECTIONS

Connect the other side to the poles.



STEP 4: FLIP SIDE

Rotate frame 90 degrees.

SETUP INSTRUCTIONS COUNTER



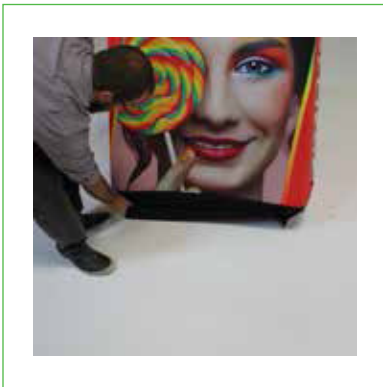
STEP 5 - HOLE FINDER

Find the holes located on the sides. This is for mounting the top piece.



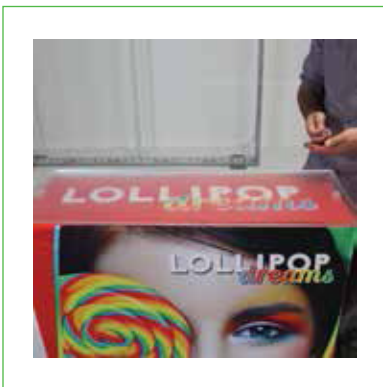
STEP 6 - SLIP & SLIDE YOUR GRAPHIC

Slide stretch fabric over frame.



STEP 7 - SOME BOTTOM SUPPORT

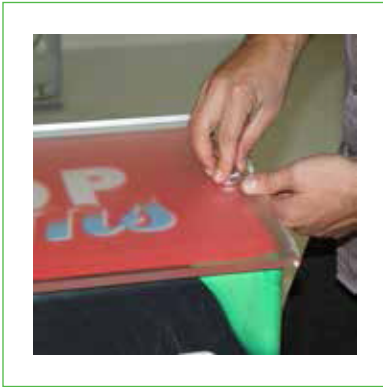
Reattach the velcro bottom portion of the fabric.



STEP 8 - SURFACING

Place counter top on top of the counter base.

SETUP INSTRUCTIONS COUNTER



STEP 9 - MAKE SURE IT STAYS

Connect the top piece with the two provided bolts.



STEP 10 - VOILÀ